

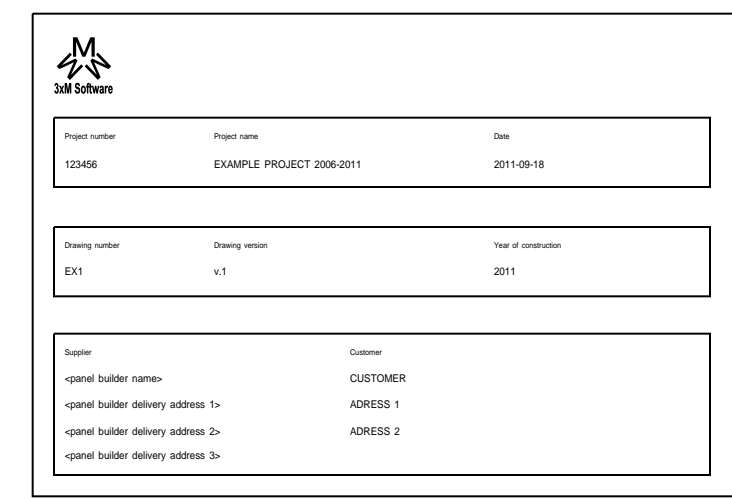


Project number	Project name	Date
123456	EXAMPLE PROJECT 2006-2011	2011-09-18

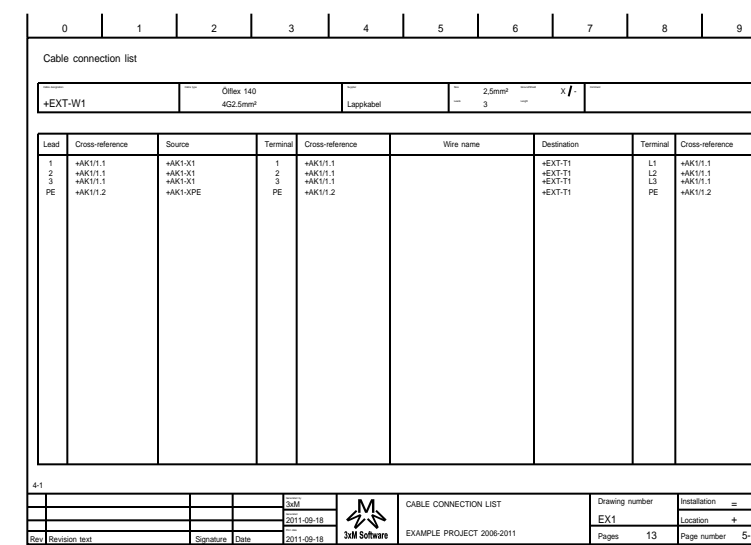
Drawing number	Drawing version	Year of construction
EX1	v.1	2011

Supplier	Customer
<panel builder name>	CUSTOMER
<panel builder delivery address 1>	ADRESS 1
<panel builder delivery address 2>	ADRESS 2
<panel builder delivery address 3>	

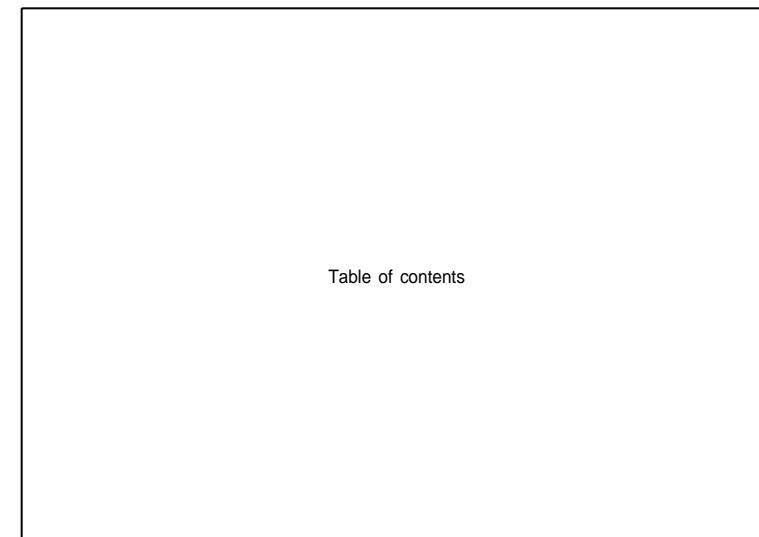
Table of contents



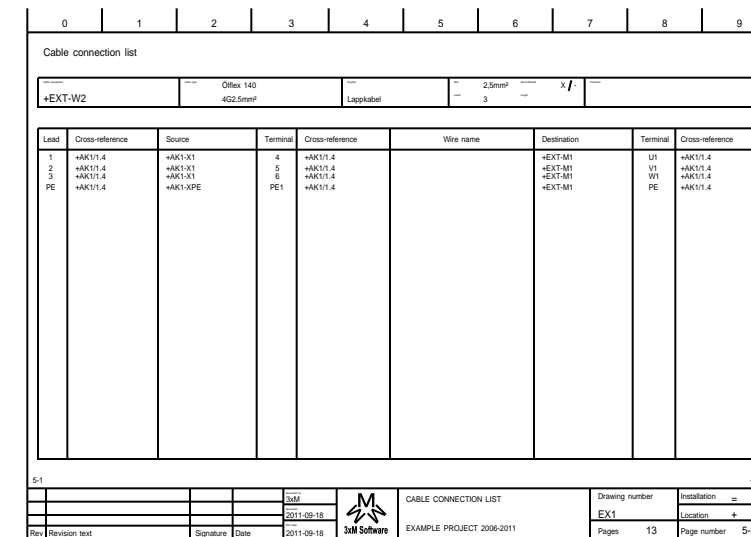
Page number **1**
 Description **INFORMATION PAGE**
 Modified **2011-09-18**
 Modified by **3xM**



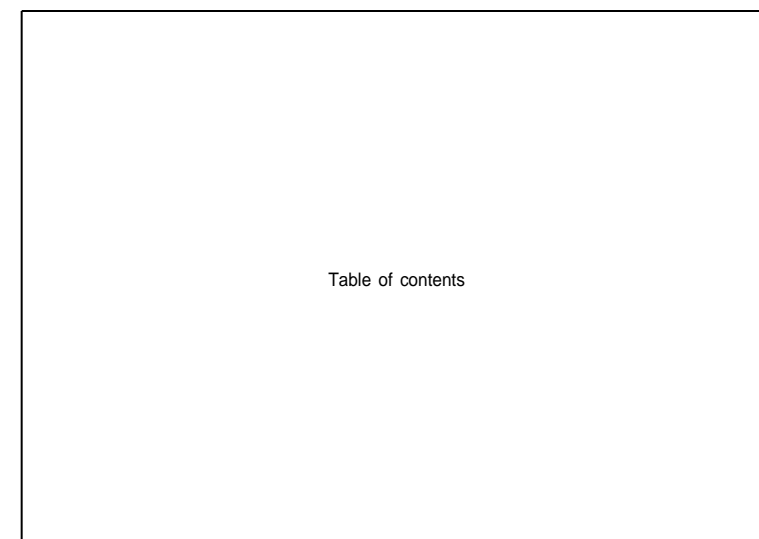
Page number **5-1**
 Description **CABLE CONNECTION LIST**
 Modified **2011-09-18**
 Modified by **3xM**



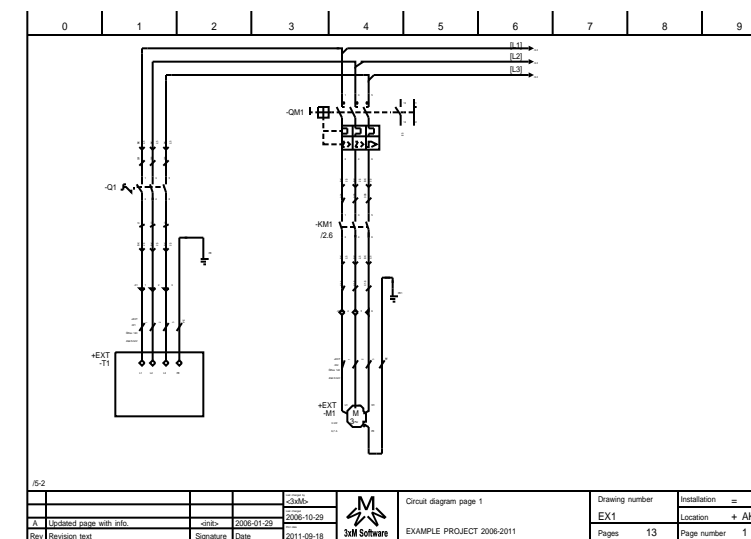
Page number **2-1**
 Description **TABLE OF CONTENTS**
 Modified **2011-09-18**
 Modified by **3xM**



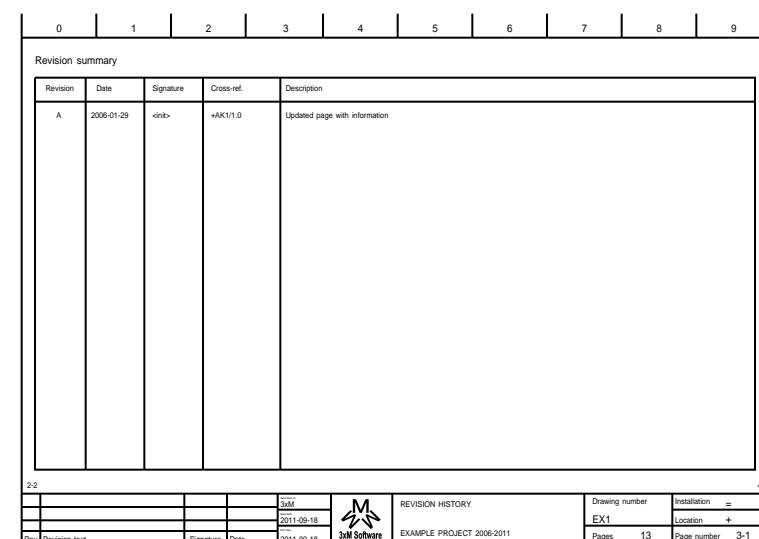
Page number **5-2**
 Description **CABLE CONNECTION LIST**
 Modified **2011-09-18**
 Modified by **3xM**



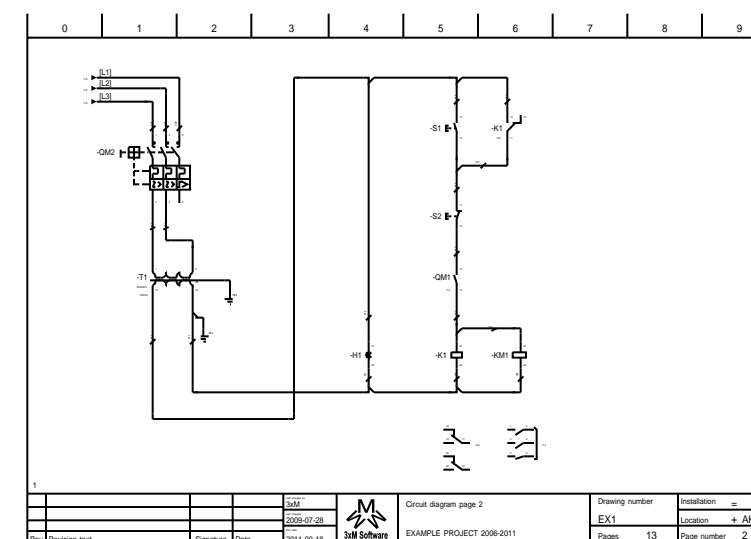
Page number **2-2**
 Description **TABLE OF CONTENTS**
 Modified **2011-09-18**
 Modified by **3xM**



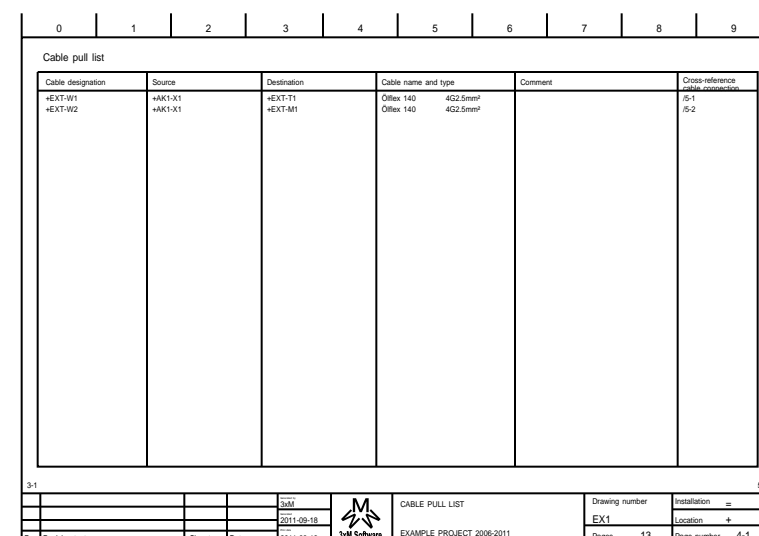
Page number **+AK1/1**
 Description **Circuit diagram page 1**
 Modified **2006-10-29**
 Modified by **<3xM>**



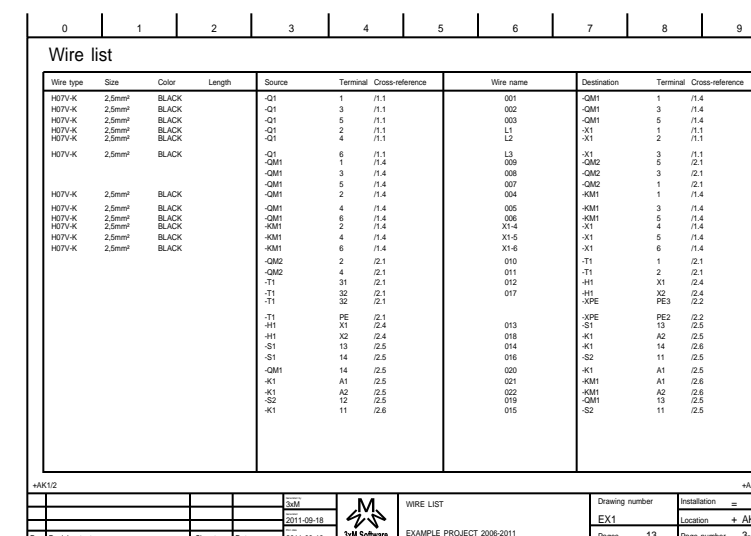
Page number **3-1**
 Description **REVISION HISTORY**
 Modified **2011-09-18**
 Modified by **3xM**



Page number **+AK1/2**
 Description **Circuit diagram page 2**
 Modified **2009-07-28**
 Modified by **3xM**



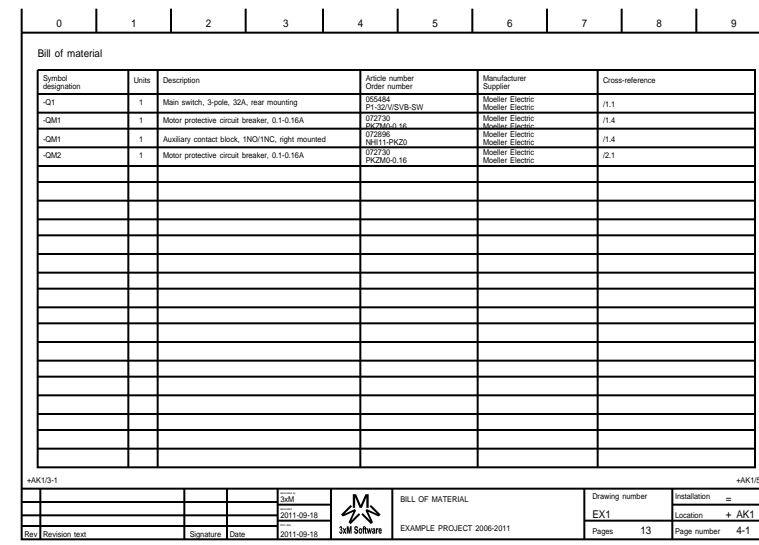
Page number **4-1**
 Description **CABLE PULL LIST**
 Modified **2011-09-18**
 Modified by **3xM**



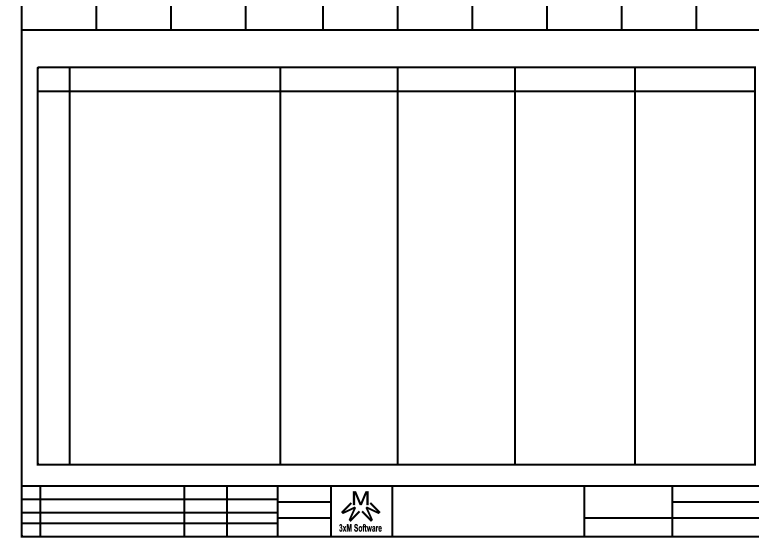
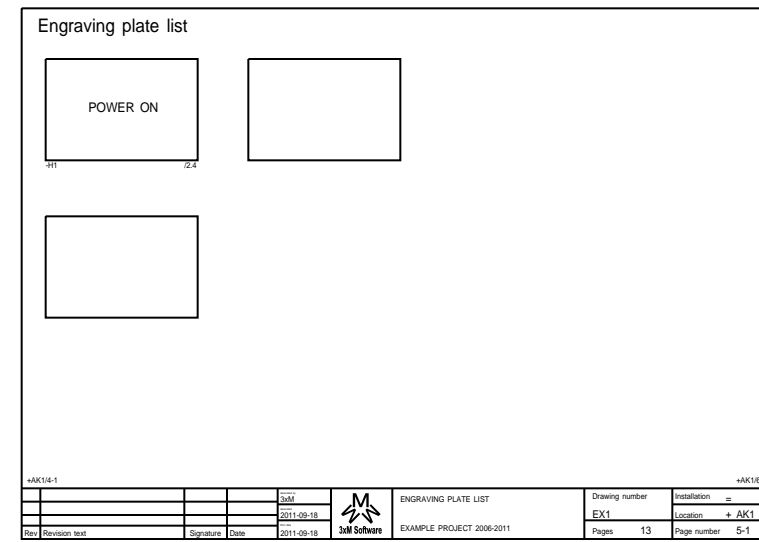
Page number **+AK1/3-1**
 Description **WIRE LIST**
 Modified **2007-01-17**
 Modified by **<3xM>**


				Generated by 3xM		TABLE OF CONTENTS	Drawing number		Installation =	
				Generated 2011-09-18			EXAMPLE PROJECT 2006-2011	EX1		Location +
Rev	Revision text	Signature	Date	Print date 2011-09-18				Pages	13	Page number

Table of contents



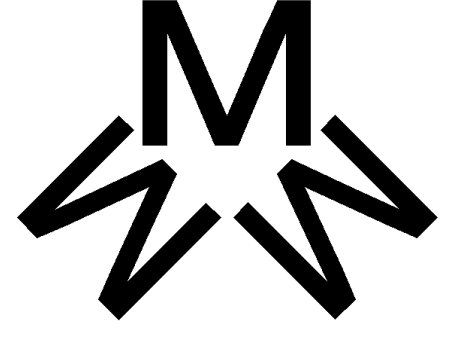
Page number +AK1/4-1
 Description BILL OF MATERIAL
 Modified 2007-01-17
 Modified by <3xM>



				Generated by 3xM		TABLE OF CONTENTS	Drawing number		Installation =
				Generated 2011-09-18			EX1	Location +	
Rev	Revision text	Signature	Date	Print date 2011-09-18			EXAMPLE PROJECT 2006-2011	Pages	13

Revision summary

Revision	Date	Signature	Cross-ref.	Description
A	2006-01-29	<init>	+AK1/1.0	Updated page with information

				Generated by 3xM	 3xM Software	REVISION HISTORY	Drawing number	Installation =
				Generated 2011-09-18		EXAMPLE PROJECT 2006-2011	EX1	Location +
Rev	Revision text	Signature	Date	Print date 2011-09-18			Pages 13	Page number 3-1

0

1

2

3

4

5

6

7

8

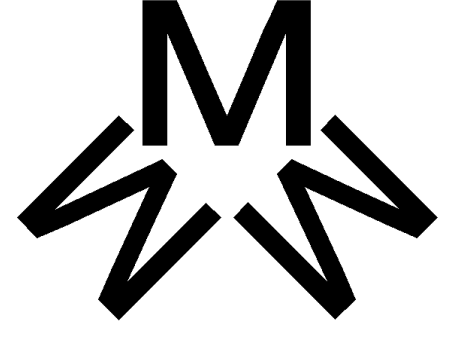
9

Cable pull list

Cable designation	Source	Destination	Cable name and type	Comment	Cross-reference cable connection
+EXT-W1 +EXT-W2	+AK1-X1 +AK1-X1	+EXT-T1 +EXT-M1	Ölflex 140 4G2.5mm ² Ölflex 140 4G2.5mm ²		/5-1 /5-2

3-1

5-1

				Generated by 3xM	 3xM Software	CABLE PULL LIST	Drawing number	Installation =
				Generated 2011-09-18			EX1	Location +
Rev	Revision text	Signature	Date	Print date 2011-09-18			Pages 13	Page number 4-1

EXAMPLE PROJECT 2006-2011

0

1

2

3

4

5

6

7

8

9

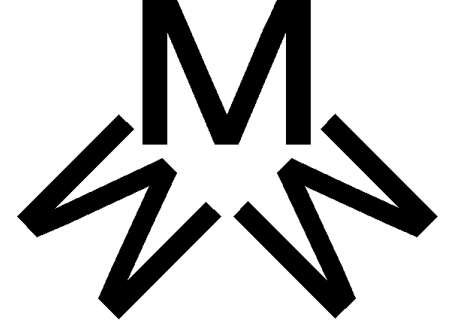
Cable connection list

Cable designation +EXT-W1	Cable type Ölflex 140 4G2.5mm²	Supplier Lappkabel	Size 2,5mm²	Ground/Shield X / -	Comment
			Leads 3	Length	

Lead	Cross-reference	Source	Terminal	Cross-reference	Wire name	Destination	Terminal	Cross-reference
1	+AK1/1.1	+AK1-X1	1	+AK1/1.1		+EXT-T1	L1	+AK1/1.1
2	+AK1/1.1	+AK1-X1	2	+AK1/1.1		+EXT-T1	L2	+AK1/1.1
3	+AK1/1.1	+AK1-X1	3	+AK1/1.1		+EXT-T1	L3	+AK1/1.1
PE	+AK1/1.2	+AK1-XPE	PE	+AK1/1.2		+EXT-T1	PE	+AK1/1.2

4-1

5-2

				Generated by 3xM	 3xM Software	CABLE CONNECTION LIST	Drawing number	Installation =
				Generated 2011-09-18			EX1	Location +
Rev	Revision text	Signature	Date	Print date 2011-09-18			Pages 13	Page number 5-1

0

1

2

3

4

5

6

7

8

9

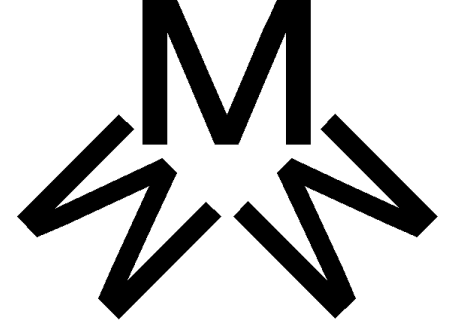
Cable connection list

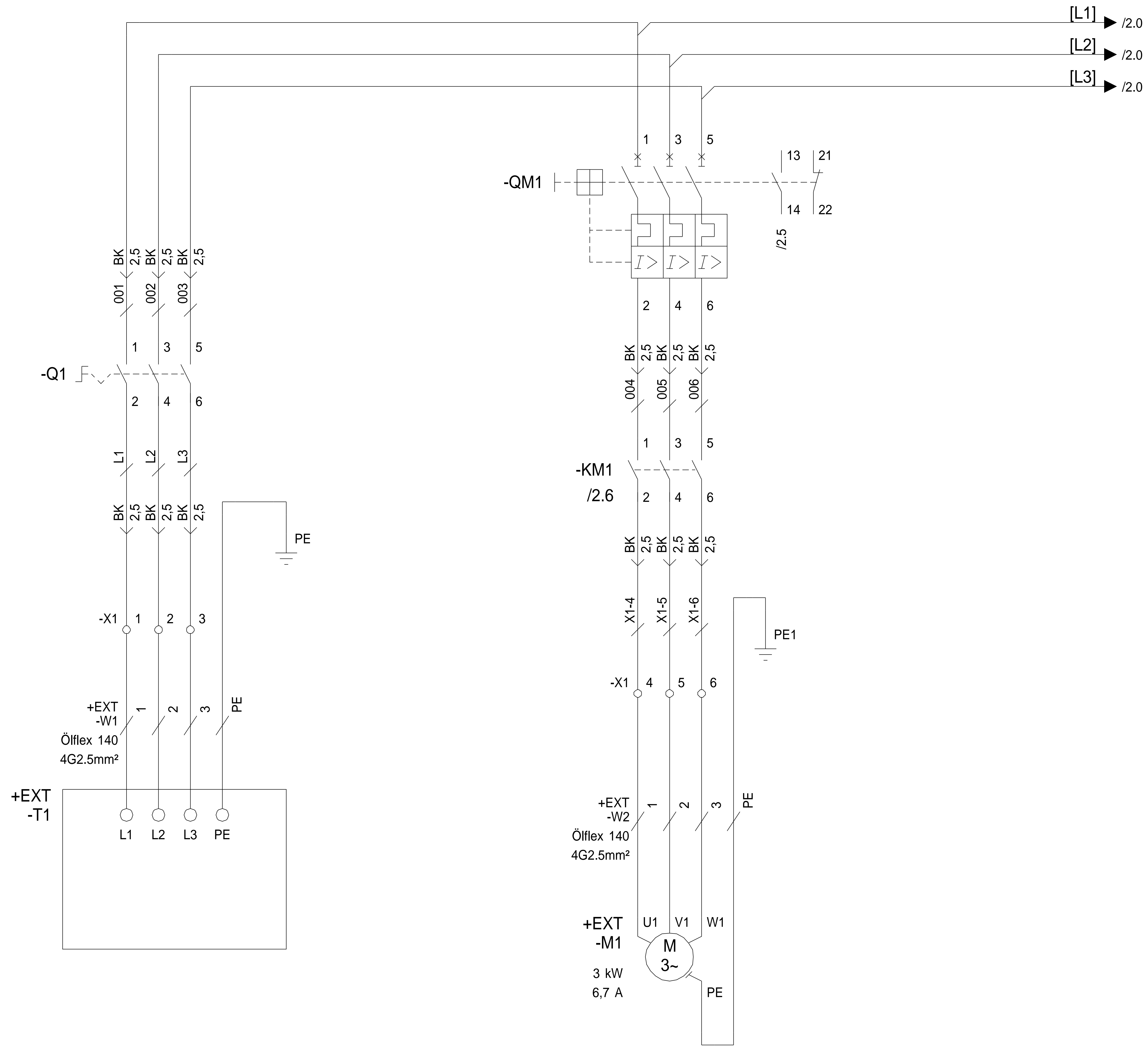
Cable designation +EXT-W2	Cable type Ölflex 140 4G2.5mm²	Supplier Lappkabel	Size 2,5mm²	Ground/Shield X / -	Comment
			Leads 3	Length	

Lead	Cross-reference	Source	Terminal	Cross-reference	Wire name	Destination	Terminal	Cross-reference
1	+AK1/1.4	+AK1-X1	4	+AK1/1.4		+EXT-M1	U1	+AK1/1.4
2	+AK1/1.4	+AK1-X1	5	+AK1/1.4		+EXT-M1	V1	+AK1/1.4
3	+AK1/1.4	+AK1-X1	6	+AK1/1.4		+EXT-M1	W1	+AK1/1.4
PE	+AK1/1.4	+AK1-XPE	PE1	+AK1/1.4		+EXT-M1	PE	+AK1/1.4

5-1

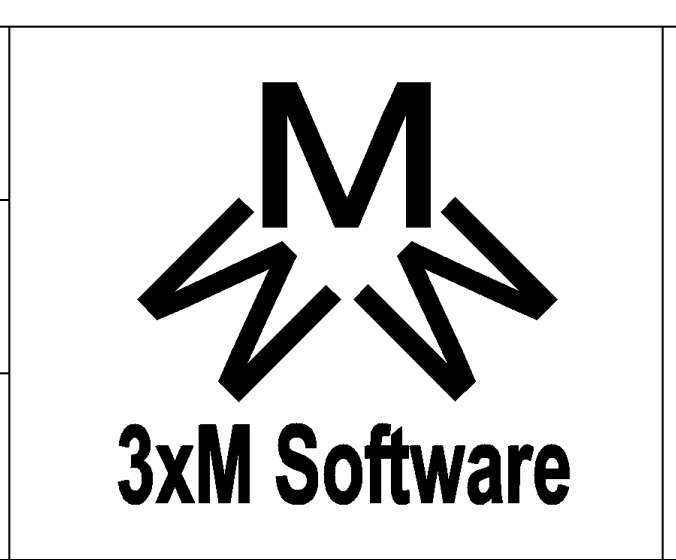
+AK1/1

				Generated by 3xM	 3xM Software	CABLE CONNECTION LIST EXAMPLE PROJECT 2006-2011	Drawing number	Installation =
				Generated 2011-09-18			EX1	Location +
Rev	Revision text	Signature	Date	Print date 2011-09-18			Pages 13	Page number 5-2



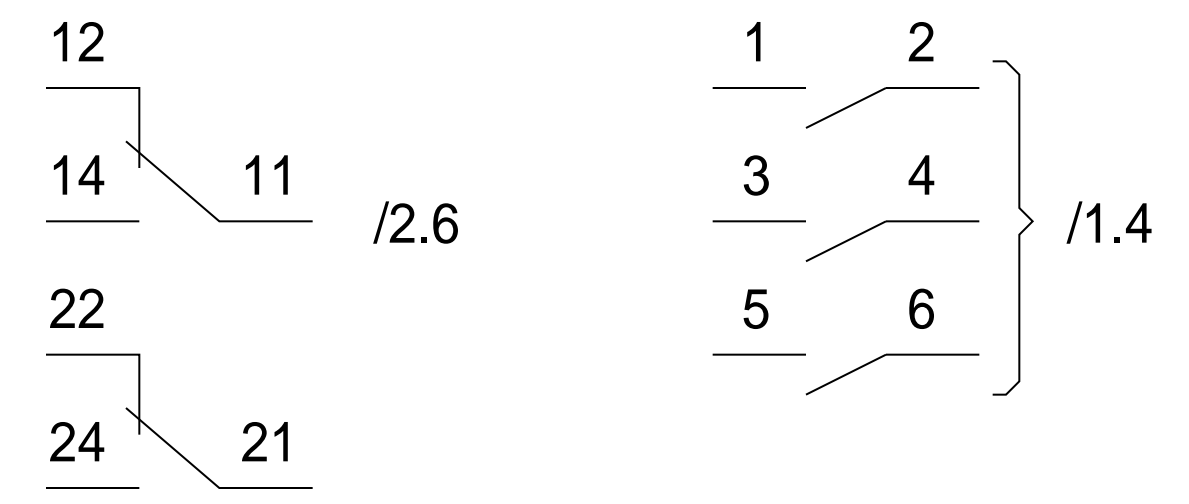
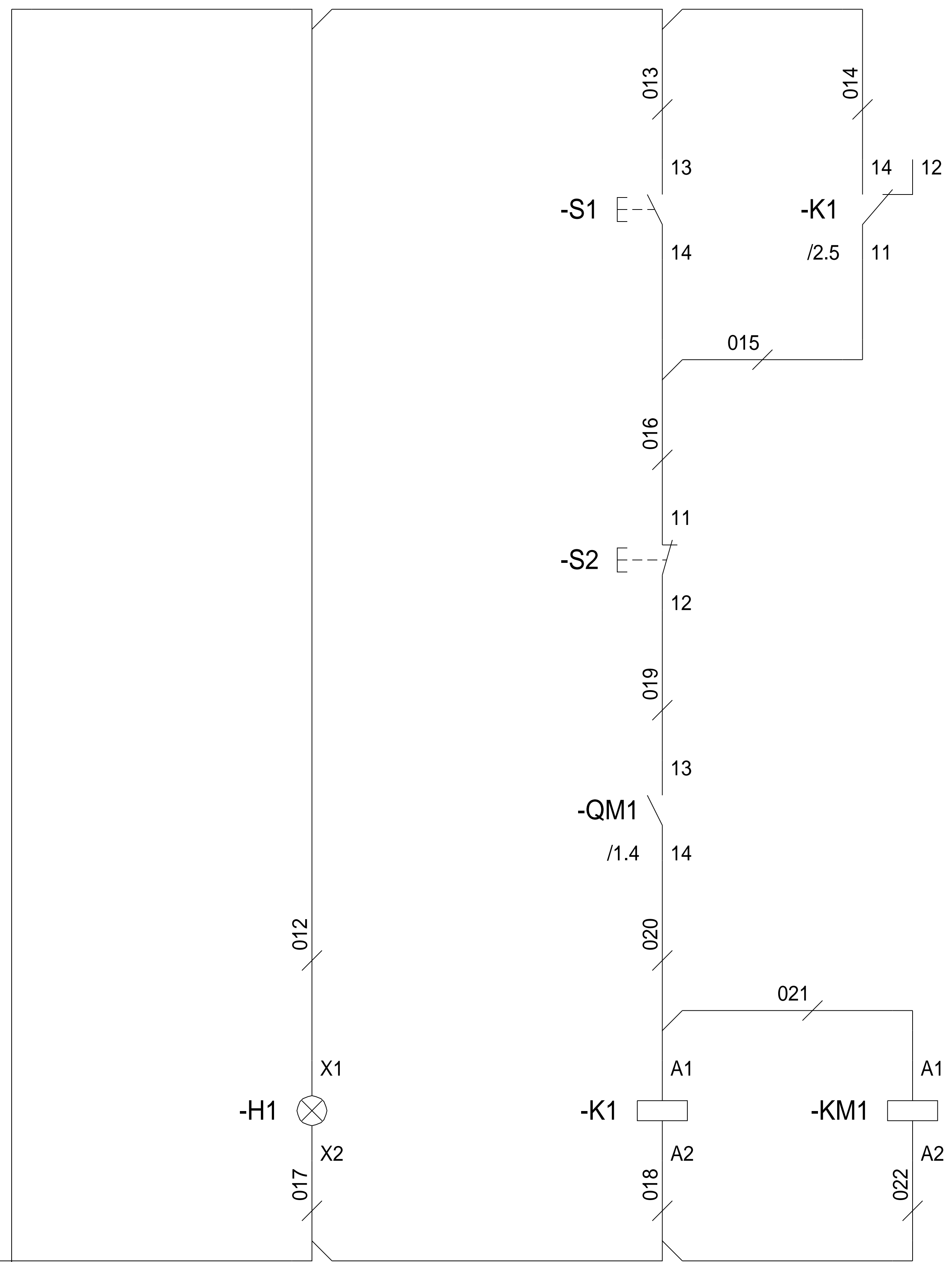
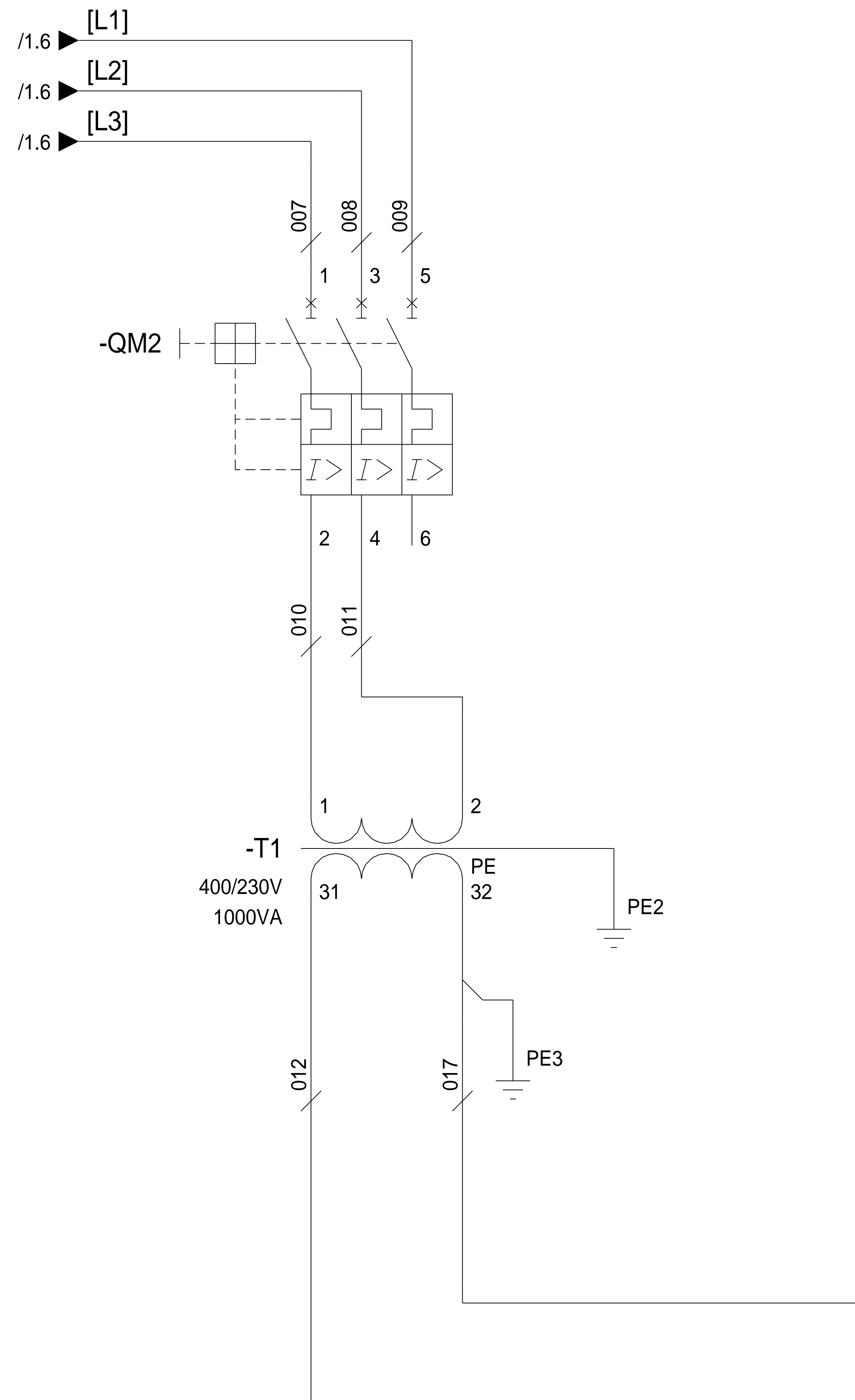
Rev	Revision text	Signature	Date
A	Updated page with info.	<init>	2006-01-29

Last changed by	<3xM>
Last changed	2006-10-29
Print date	2011-09-18



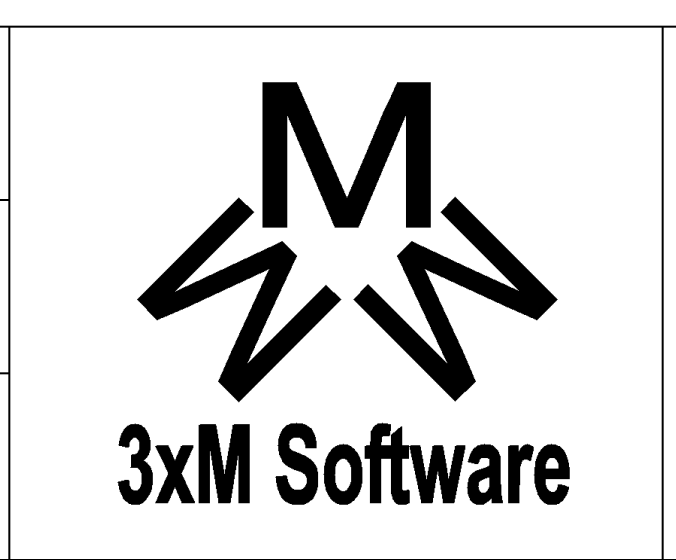
Circuit diagram page 1
 EXAMPLE PROJECT 2006-2011

Drawing number	EX1	Installation	=
Pages	13	Location	+ AK1
		Page number	1



Rev	Revision text	Signature	Date
-----	---------------	-----------	------

Last changed by	3xM
Last changed	2009-07-28
Print date	2011-09-18



Circuit diagram page 2
 EXAMPLE PROJECT 2006-2011

Drawing number	EX1
Pages	13

Installation	=
Location	+ AK1
Page number	2

0

1

2

3

4

5

6

7

8

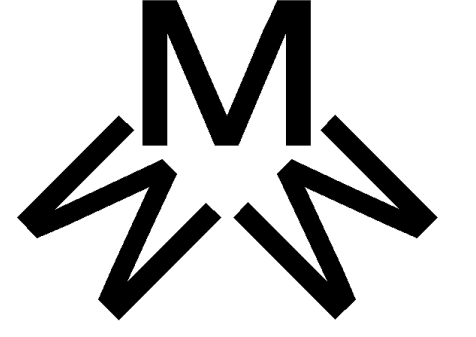
9

Wire list

Wire type	Size	Color	Length	Source	Terminal	Cross-reference	Wire name	Destination	Terminal	Cross-reference
H07V-K	2,5mm ²	BLACK		-Q1	1	/1.1	001	-QM1	1	/1.4
H07V-K	2,5mm ²	BLACK		-Q1	3	/1.1	002	-QM1	3	/1.4
H07V-K	2,5mm ²	BLACK		-Q1	5	/1.1	003	-QM1	5	/1.4
H07V-K	2,5mm ²	BLACK		-Q1	2	/1.1	L1	-X1	1	/1.1
H07V-K	2,5mm ²	BLACK		-Q1	4	/1.1	L2	-X1	2	/1.1
H07V-K	2,5mm ²	BLACK		-Q1	6	/1.1	L3	-X1	3	/1.1
				-QM1	1	/1.4	009	-QM2	5	/2.1
				-QM1	3	/1.4	008	-QM2	3	/2.1
				-QM1	5	/1.4	007	-QM2	1	/2.1
H07V-K	2,5mm ²	BLACK		-QM1	2	/1.4	004	-KM1	1	/1.4
H07V-K	2,5mm ²	BLACK		-QM1	4	/1.4	005	-KM1	3	/1.4
H07V-K	2,5mm ²	BLACK		-QM1	6	/1.4	006	-KM1	5	/1.4
H07V-K	2,5mm ²	BLACK		-KM1	2	/1.4	X1-4	-X1	4	/1.4
H07V-K	2,5mm ²	BLACK		-KM1	4	/1.4	X1-5	-X1	5	/1.4
H07V-K	2,5mm ²	BLACK		-KM1	6	/1.4	X1-6	-X1	6	/1.4
				-QM2	2	/2.1	010	-T1	1	/2.1
				-QM2	4	/2.1	011	-T1	2	/2.1
				-T1	31	/2.1	012	-H1	X1	/2.4
				-T1	32	/2.1	017	-H1	X2	/2.4
				-T1	32	/2.1		-XPE	PE3	/2.2
				-T1	PE	/2.1		-XPE	PE2	/2.2
				-H1	X1	/2.4	013	-S1	13	/2.5
				-H1	X2	/2.4	018	-K1	A2	/2.5
				-S1	13	/2.5	014	-K1	14	/2.6
				-S1	14	/2.5	016	-S2	11	/2.5
				-QM1	14	/2.5	020	-K1	A1	/2.5
				-K1	A1	/2.5	021	-KM1	A1	/2.6
				-K1	A2	/2.5	022	-KM1	A2	/2.6
				-S2	12	/2.5	019	-QM1	13	/2.5
				-K1	11	/2.6	015	-S2	11	/2.5

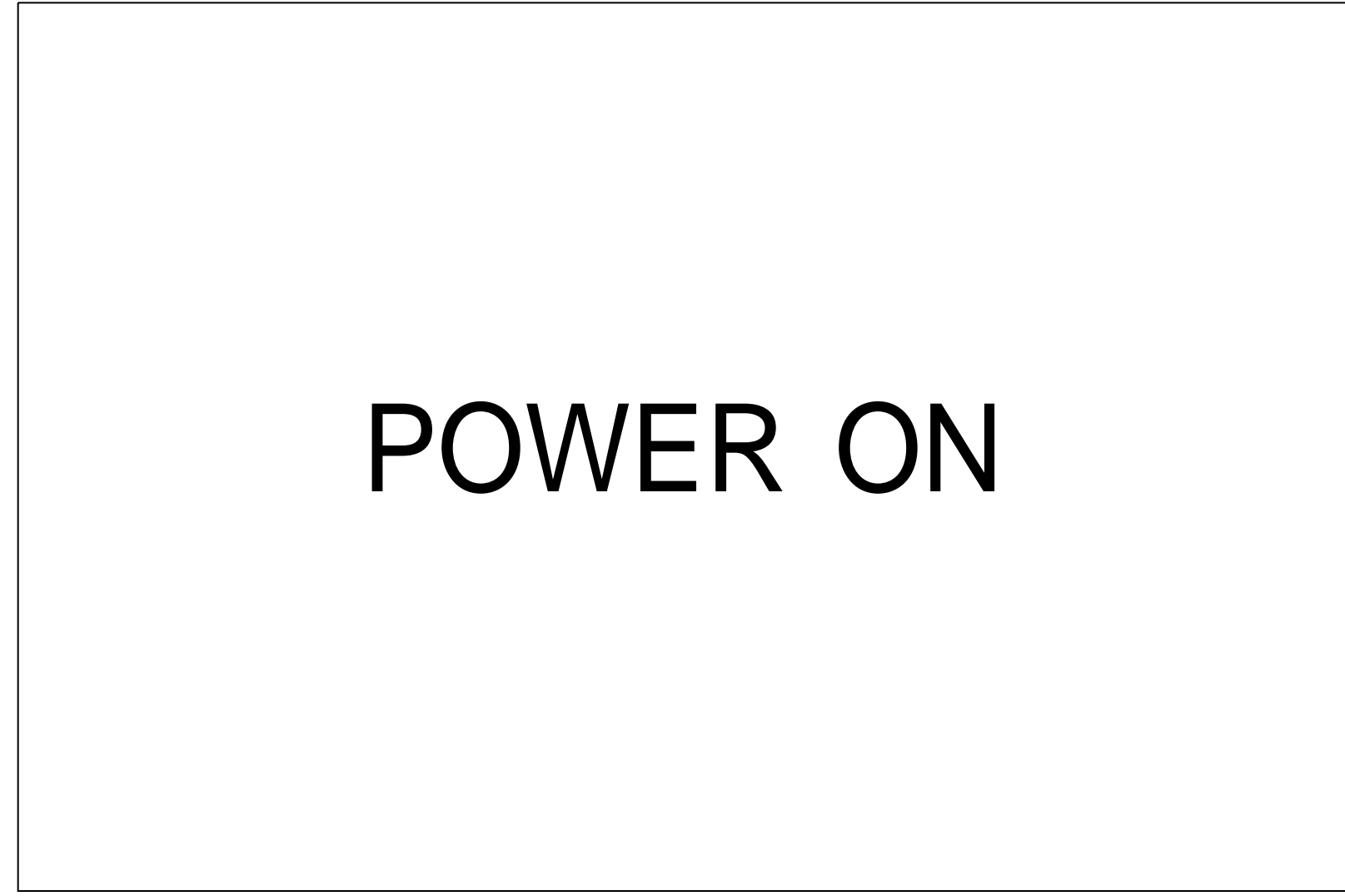
+AK1/2

+AK1/4-1

				Generated by 3xM	 3xM Software	WIRE LIST	Drawing number	Installation =
				Generated 2011-09-18			EX1	Location + AK1
Rev	Revision text	Signature	Date	Print date 2011-09-18			Pages 13	Page number 3-1

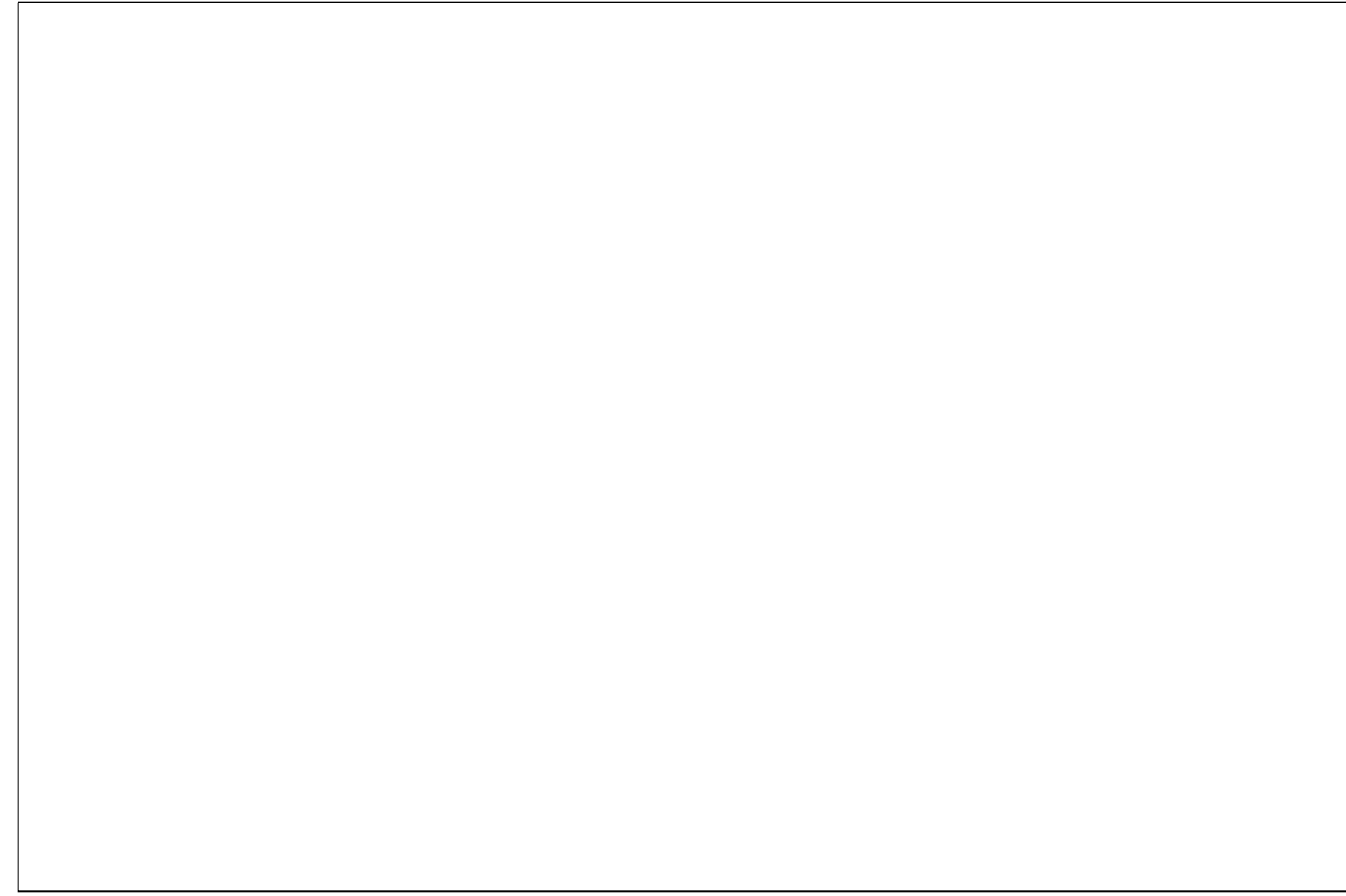
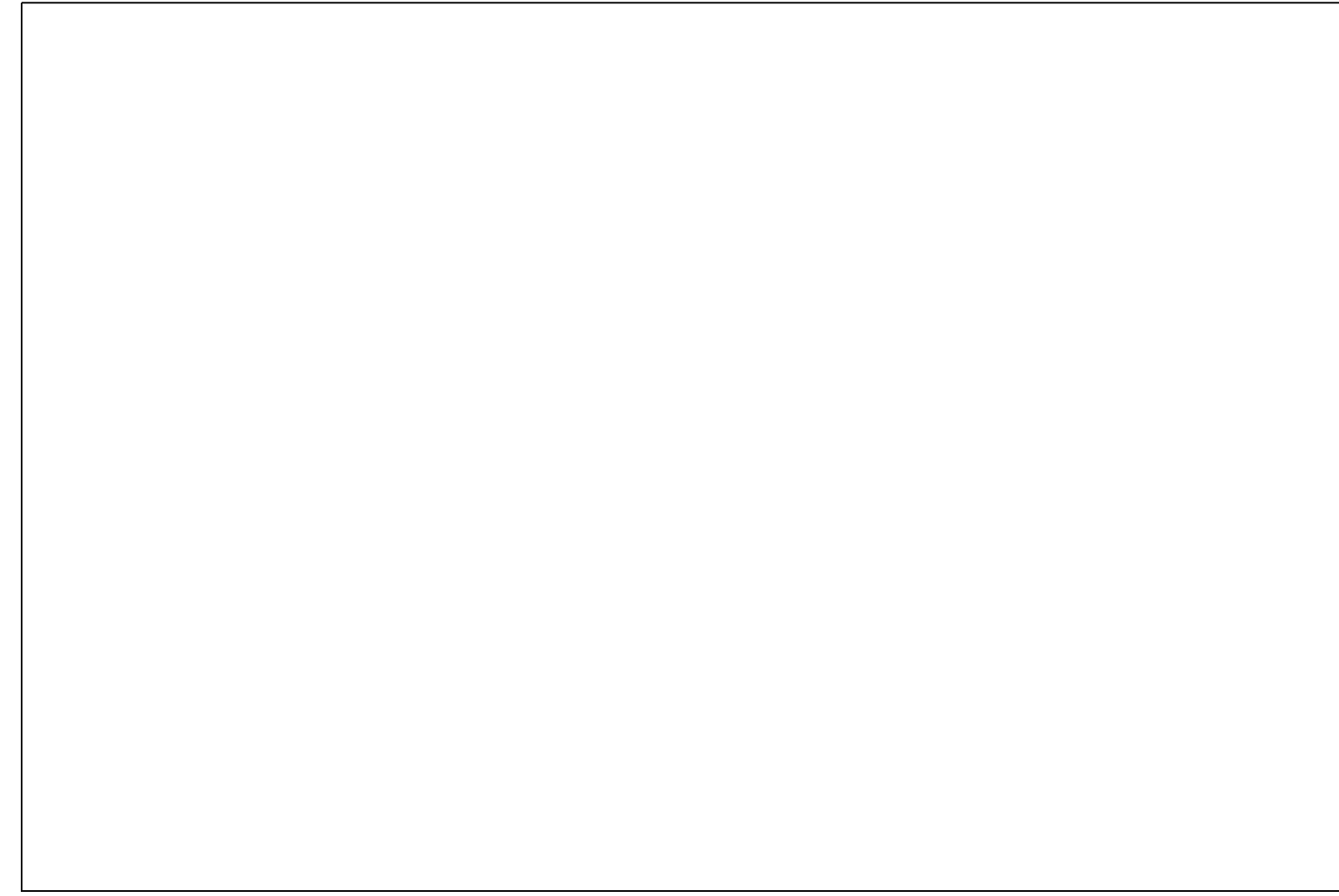
EXAMPLE PROJECT 2006-2011

Engraving plate list



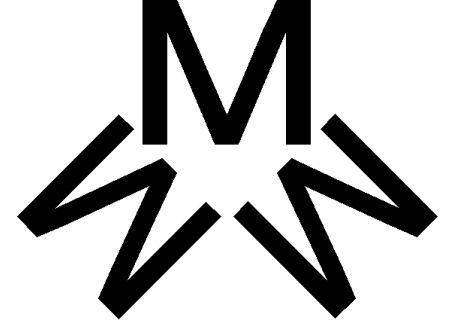
-H1

/2.4



+AK1/4-1

+AK1/6-1

				Generated by 3xM	 3xM Software	ENGRAVING PLATE LIST EXAMPLE PROJECT 2006-2011	Drawing number	Installation =
				Generated 2011-09-18			EX1	Location + AK1
Rev	Revision text	Signature	Date	Print date 2011-09-18			Pages 13	Page number 5-1

0

1

2

3

4

5

6

7

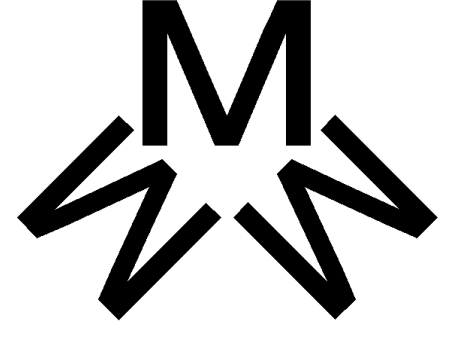
8

9

Recommended spare part list

Units	Description	Article number	Order number	Manufacturer	Supplier
1	Motor protective circuit breaker, 0.1-0.16A	072730	PKZM0-0.16	Moeller Electric	Moeller Electric

+AK1/5-1

				Generated by 3xM	 3xM Software	RECOMMENDED SPARE PART LIST	Drawing number	Installation =
				Generated 2011-09-18			EX1	Location + AK1
Rev	Revision text	Signature	Date	Print date 2011-09-18			Pages 13	Page number 6-1

RECOMMENDED SPARE PART LIST

EXAMPLE PROJECT 2006-2011

Drawing number

EX1

Pages

13

Installation

=

Location

+ AK1

Page number

6-1